

# TECHNICAL SPECIFICATIONS

## Jan Rozman: wetware

### Technical manager:

Aljaž Zaletel

phone: +386 41 323 538, mail: [aljaz.zaletel@gmail.com](mailto:aljaz.zaletel@gmail.com)

### Touring personnel:

1 performer, 2 technicians (video/laser & sound/light)

### Features:

Sound and light mixing desks as well as the video computer are placed in the tech booth/regie behind the audience. In the performance we are using a fog machine and a haze machine. A **laser** is used in the performance.

### Stage:

Open black box stage, the audience seated on a raised tribune. A black dance floor is needed. The back wall and the floor are used as projection surfaces. Alternatively, a dark projection screen or a strengthened black curtain could be installed in front of the back wall. The minimum size of the stage is 8 x 8 m. An exit from the stage is needed on the left-hand side (stage right). A full blackout should be possible.

We are using **water** on stage for a waterfall effect. The water will be poured in a small inflatable pool placed on the floor that we are providing. Minor spraying of water around the pool is expected. A water faucet with the possibility of attaching a garden hose should be available near the stage. We provide a 25m hose. If the distance to the faucet is bigger, the organizer should provide an additional hose.

### Stage Equipment:

- 1x black chair (used as a prop)
- 1x air pump/compressor (for inflating the pool before the performance)

## **Installation and transport:**

Set-up and rehearsal take 8 hours. The clean-up after the performance takes 1 hour, excluding delivery and transport. We use a van to transport the scenography and the team. It is possible to set up and perform on the same day.

## **Sound:**

- 1 x digital sound board with reverb effect
- FOH + 2 monitors for the performer
- 1 x wireless hand microphone
- 1 x USB A cable to connect the computer
- 2 x jack to XLR cables (1 x male, 1 x female) to connect our Voice transformer (Roland VT-4)
- 6 x microphone stand, standard height
- 2x microphone stand, low

## **Light:**

- 8 x Robe Robin Spote moving head
- 11 x Par 64 CP62 (10 x R201)
- 12 x Fresnel 1kW (12 x R201)
- 8 x PC 1kW (8 x R202)
- 3 x Profile 23°- 50° (2 x iris, 2 x R200, 1 x R126), or 2 Profiles and 1 Followspot
- 12 x Flood light 500W or dimmable house light and dimmable working lights on stage
- 1 x Hazer (back right corner)
- 1 x Fogger (front left corner)
- 1 x dimmer channel for blender (back centre)

## **Video & Laser:**

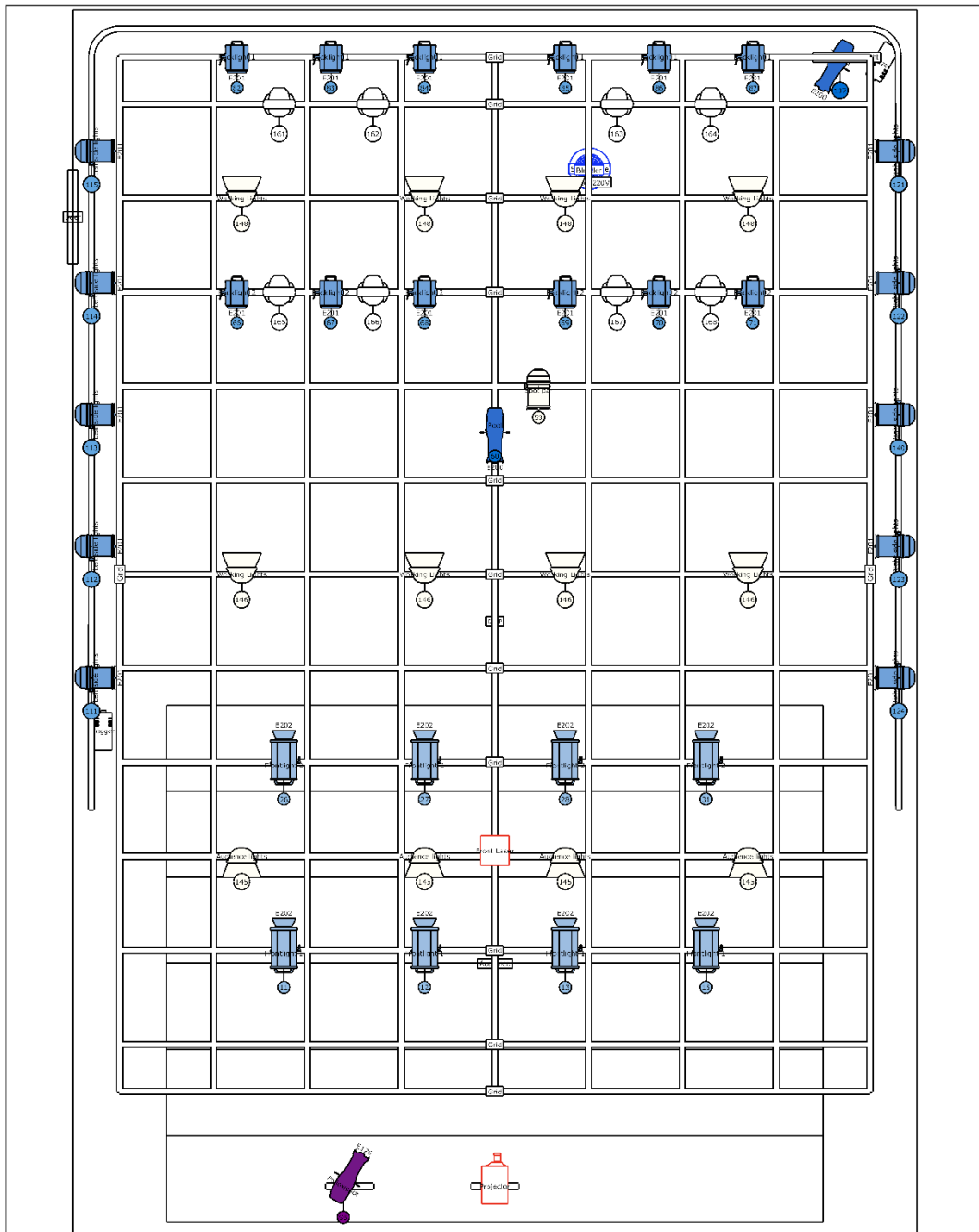
- A stable wi-fi connection
- 1x Video Projector min. 10k lumens with a wide lens (it should cover the back wall and the floor)
- 1x HDMI cable from the projector to the tech booth
- 1x computer monitor with VGA or DisplayPort connection
- 1x 0.5m metal hook/rod for mounting the laser below the lights

We are using Laserworld DS-1000RGB MK5 (weight: 2 kg) in the performance. The laser is provided by us.

We are using a webcam on the stage (back right corner) with a USB connection to the tech booth. We provide 45m USB cable. If the distance is longer than that an USB-ethernet-USB converter with an ethernet extension cable or another alternative should be provided by the organizer.

# Light plan:


## TOP VIEW




### Fixtures

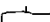
 Floodlight 500W (12)


 Fresnel ADB Europe F 101 (12) (R201)


 Par 64 CP62 (11) (10 x R201)

 PC ADB Europe C 101 (8) (R202)

 Robin Spote (8)

 Profile Selecon Pacific 23°-50° (3) (2 x R200, 1 x R126)

 1 x Hazer + 1 x Fogger

 Projector 10.000 ANSU, wide lense (1)

 Laser 1W

# SIDE VIEW

