

emanat

Burja Podlesnik: Two Men in Underwear

TECHNICAL RIDER

March 2026

EMANAT – Tamara Pepelnik (Production) info@emanat.si 00 386 (1) 43 05 724	Burja Podlesnik (Choreography) burja.p@gmail.com
Veronika Hana Grubič (Lights) veronika.grubic@gmail.com	



1. GENERAL INFORMATION

The organiser should provide the producer with technical information about the venue (dimensions, a list of technical equipment, stage plan – ground plan, side view). On the basis of this information, the performance can be adjusted to the venue.

LIGHTS TO BE SET UP AND OPERATED BY ORGANISER TECHNICIANS.

Technical rider is a part of the contract between the producer and the organiser of the performance. The requirements listed in this rider are designed to allow the best possible realisation of the performance. Any departures from the requirements listed below needs to be agreed upon by common consent between the producer, the performance technician and the organiser. Technical adaptations are possible and are a matter of further arrangements.

Running time: 50 minutes without intermission

Company on tour with three (3) people:

Performers: 2

Choreographer: 1

2. STAGE

We require

Please send us photos and dimensions of the performance space (stage and audience) before the tour.

- Stage Area: 8mW x 8mD (the dimensions of the performance space, the stage can be larger)
- Black dance floor throughout the stage
- Chairs with backrests, placed in an oval around the stage

DESCRIPTION OF THE SPACE

The stage and theatre space have to be empty and clean when we arrive. The stage should be heated to maintain a temperature of 21°C.

We need an open, empty space without curtains or any scenographic elements. The floor should be completely covered with a black dance floor and cleaned before the team arrives. The audience sits on chairs arranged in an oval around the stage in the dimensions written above. The performance is designed to be viewed from all sides (360°), the direct proximity of the audience is key. The feeling in the space should be reminiscent of an arena.

The performance has no set design and is in silence.

We bring

- 2x water bottles

3. LIGHTS

We require

Please provide the producer with technical plans (in DWG or PDF format) of your lighting plan and a list of lighting equipment before the tour so that we can send you a customised lighting layout plan.

LIGHTS TO BE SET UP AND OPERATED BY ORGANISER TECHNICIANS.

There are two light cues during the performance.

- 12x ETC – Source Four Zoom or similar

- 8x PC with barndoors

- 8x Fresnel with barndoors

GELS: Roscolux Supergel 54 (Profile + Fresnel), Roscolux, Cinegel, R302 (PC)

*Chamsys MQ mixer or wing / GrandMA 2 or 3 / ETC or similar – ability to run cues

4. SOUND

The performance is in silence.

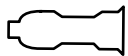
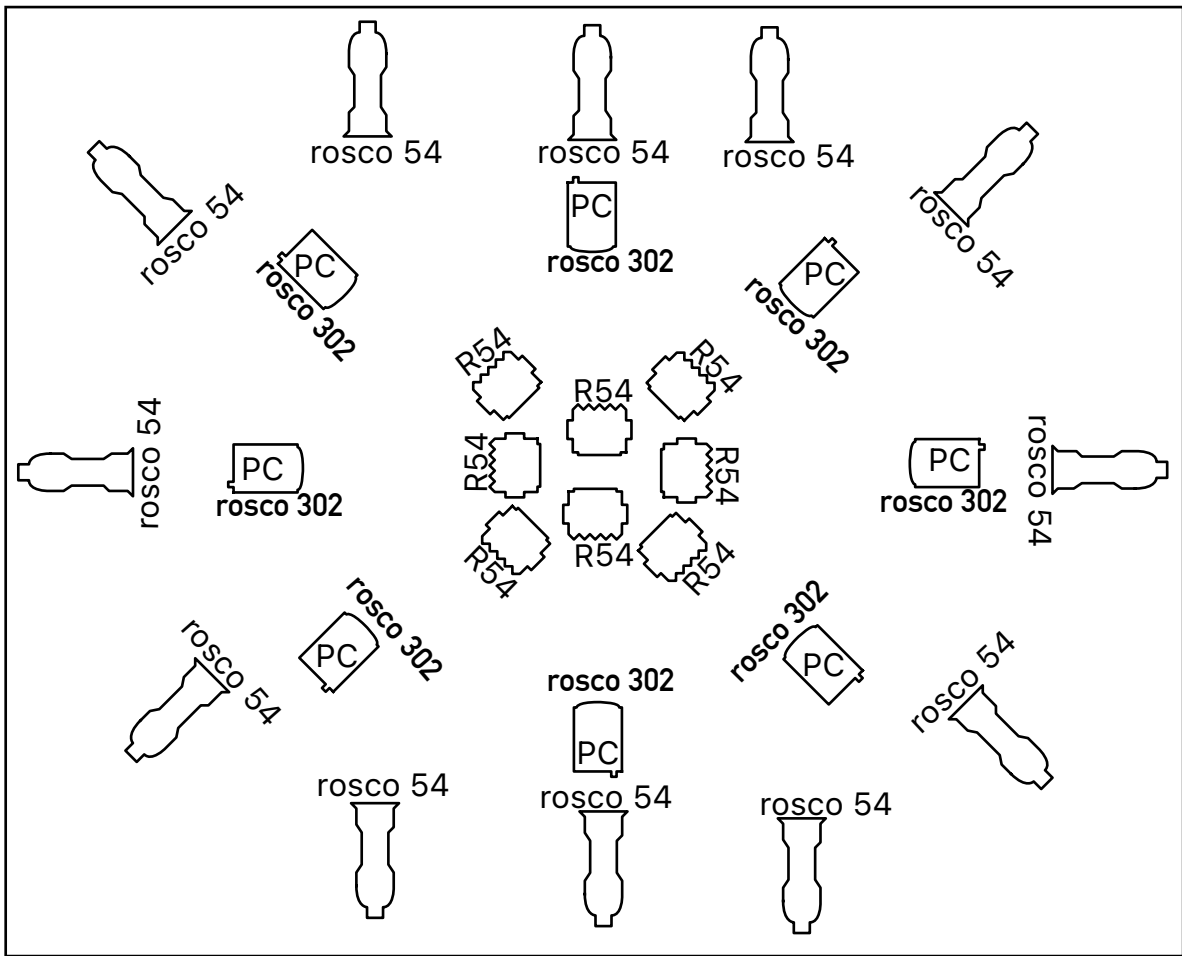
5. SCHEDULE

If the following schedule is not suitable for the theatre/organiser, please contact the producer or choreographer to arrange changes to the schedule. The performance can be performed on the day of entry. The host must provide the following number of staff:

- STAGE: 1
- LIGHT: 1

Time	Activity
11.45	arrival of the team
12.00-14.00	warm-up
14.00-15.00	rehearsal
15.00-17.00	run and corrections
17.00-18.30	pause
18.30-20.00	preparation
20.00	performance





halogen profile light ETC – Source Four Zoom or similar



halogen fresnel light



halogen PC

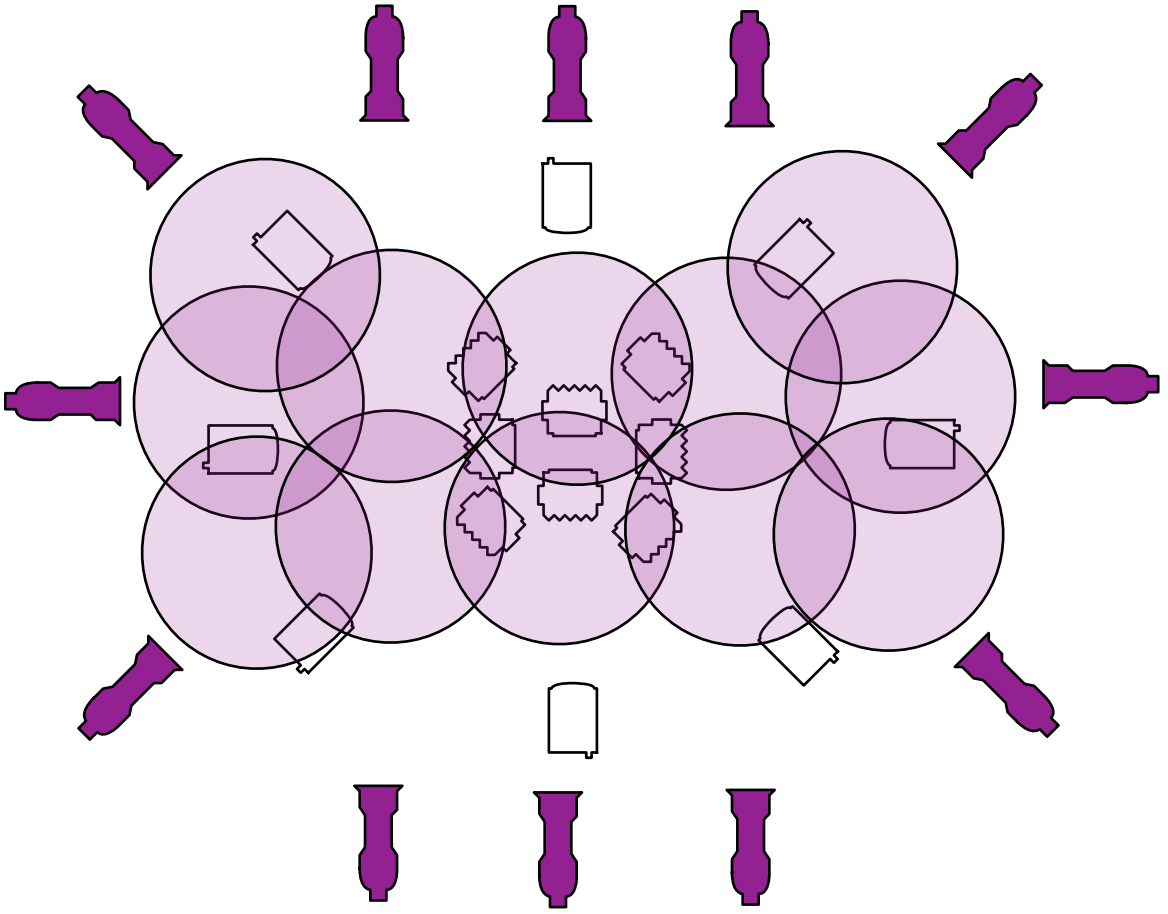
gels:

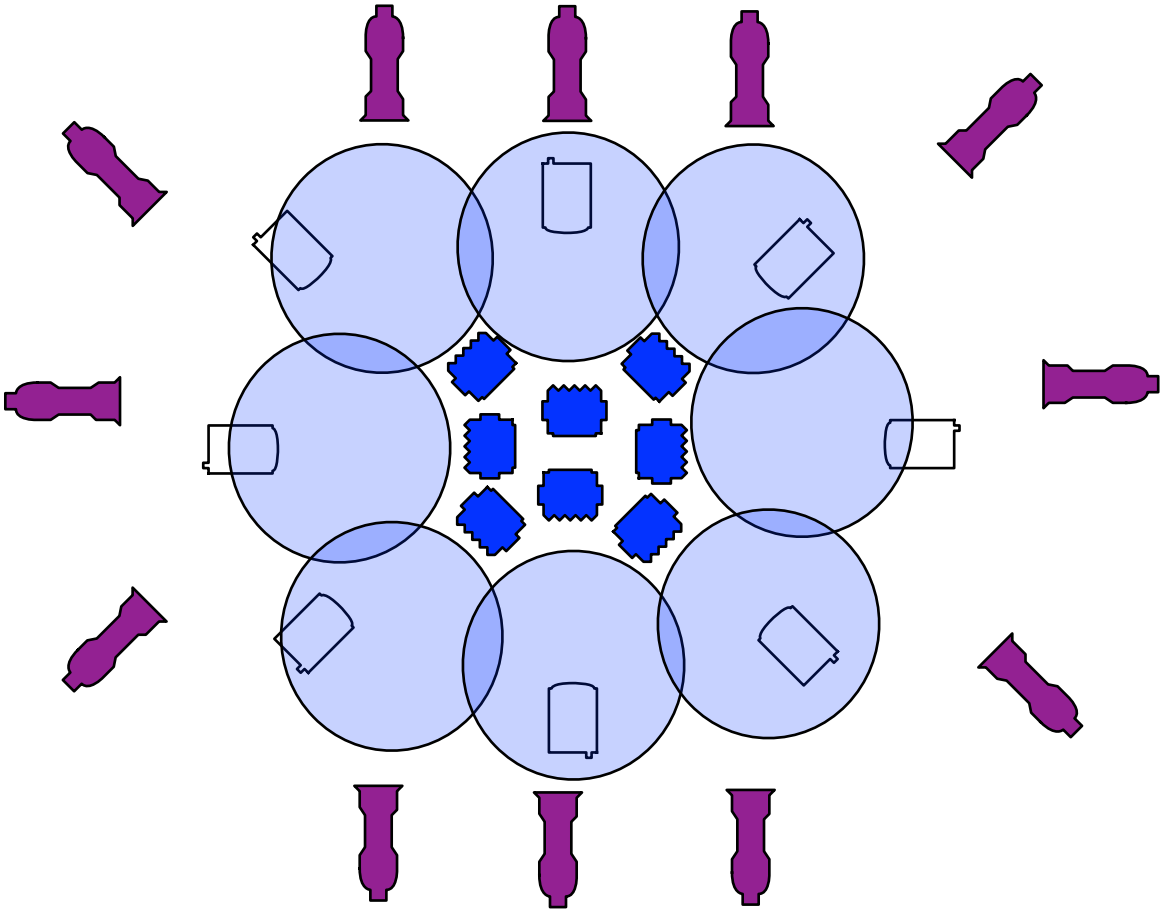
Roscolux, Supergel, R54

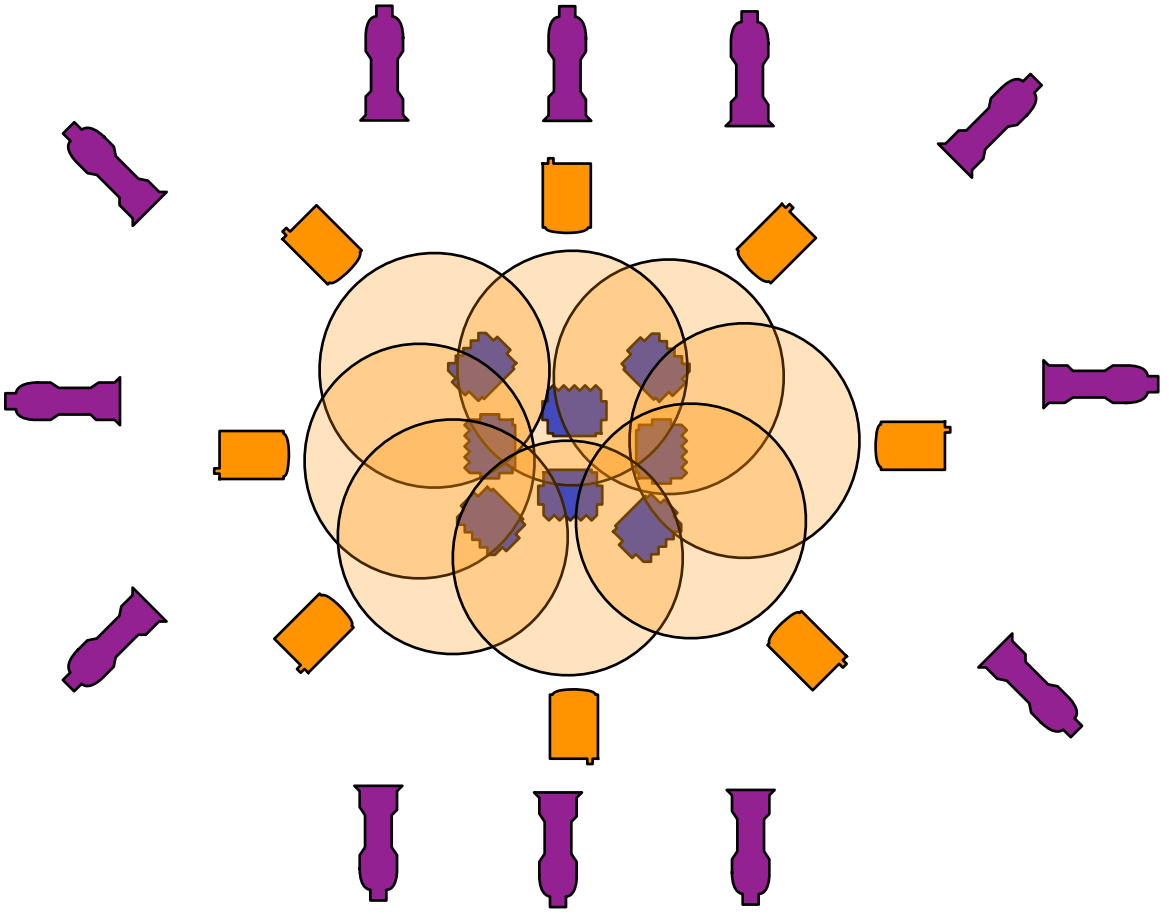
Special Lavender

Roscolux, Cinegel, R302

Pale Bastard Amber







Burja Podlesnik: Two Men in Underwear, cue list

1. cue

1 85%
2 90%
3 90%
4 90%
5 85%
6 90%
7 85%
8 90%
9 90%
10 90%
11 85%
12 90%

13 90 %
14 90 %
15 90 %
16 90 %
17 90 %
18 90 %
19 90 %
20 90 %

2. cue (fade time: 360 sec)

1 70 %
2 70 %
3 70 %
4 70 %
5 70 %
6 70 %
7 70 %
8 70 %
9 70 %
10 70 %
11 70 %
12 70 %

13 70 %
14 70 %
15 70 %
16 70 %
17 70 %
18 70 %
19 70 %
20 70 %

21 85%
22 85%
23 85%
24 85%
25 85%
26 85%
27 85%
28 85%

3. cue: lights out